

Architectural designer and project coordinator focused on building coordination, construction documentation, and public-facing interior environments. Experienced in supporting projects through design development, permit, construction documentation, and site coordination, with close collaboration across consultants, contractors, construction managers, and specialty trades.

Project Delivery

Design development · Permit · Tender support ·
Construction documentation · Site coordination

Technical Coordination

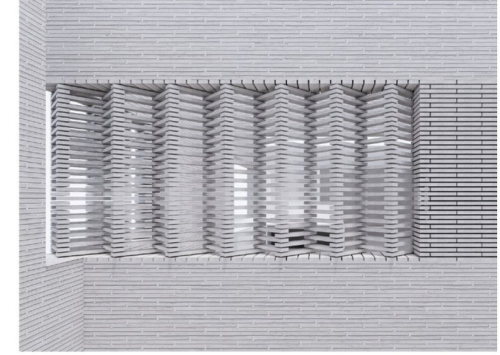
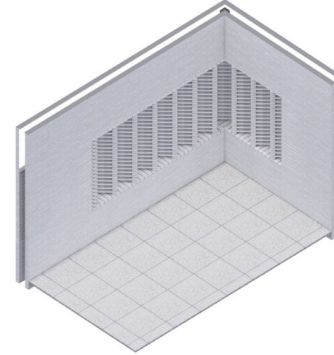
Consultant coordination · Shop drawings · RFIs ·
Details · Existing site conditions

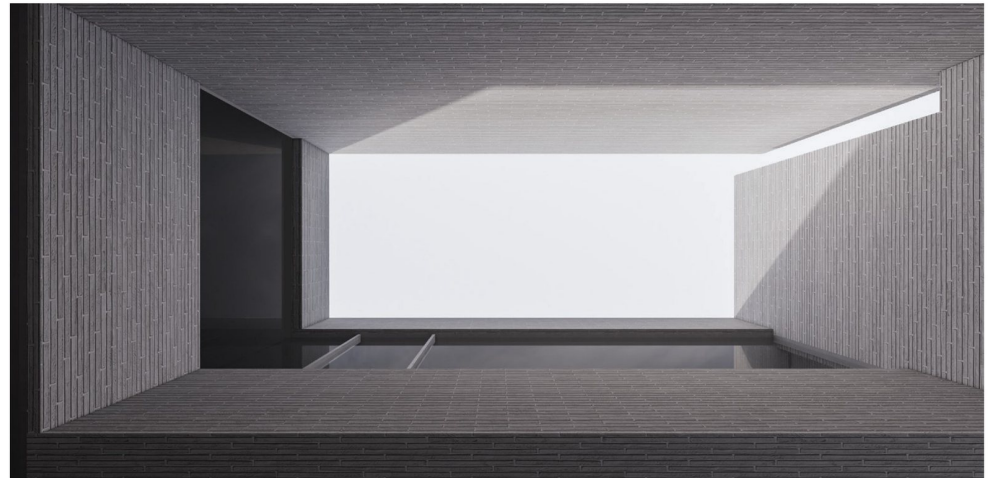
Selected Project Types

Custom residential · Hospitality · Retail ·
Workplace · Showroom · Public landscape

Burgundy Residence

Type Custom Residential
Location Oakville, Ontario
Status Under Construction
Role Architectural Coordination + Interior Design + Site documentation
Phases Design Development, Permit, Construction
Team Architect, structural, mechanical, envelope, contractor, specialty trades





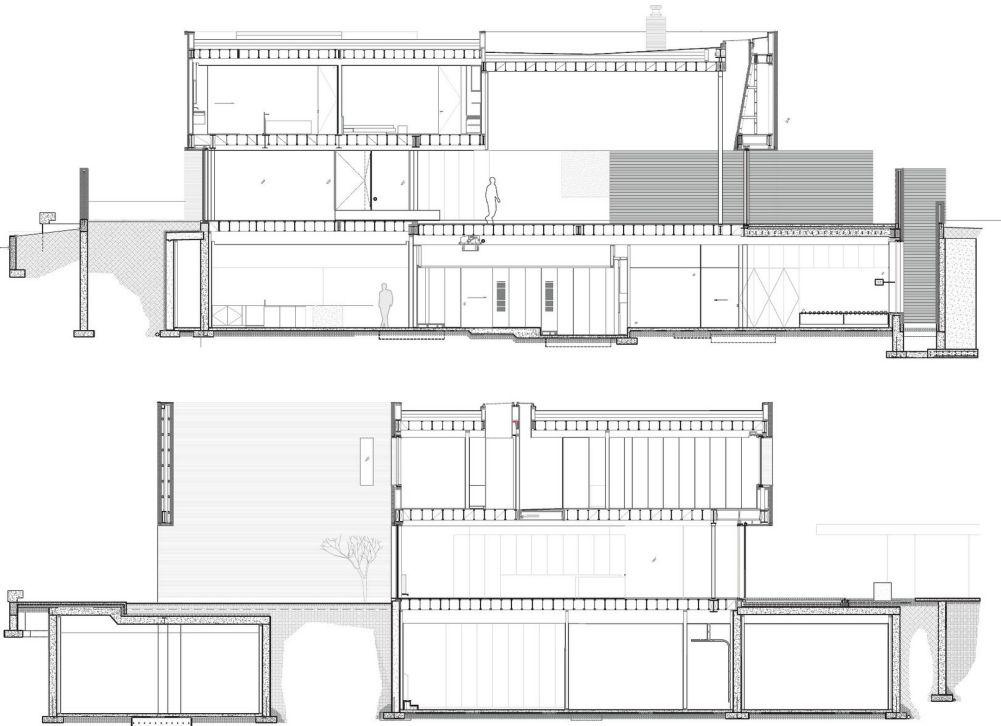
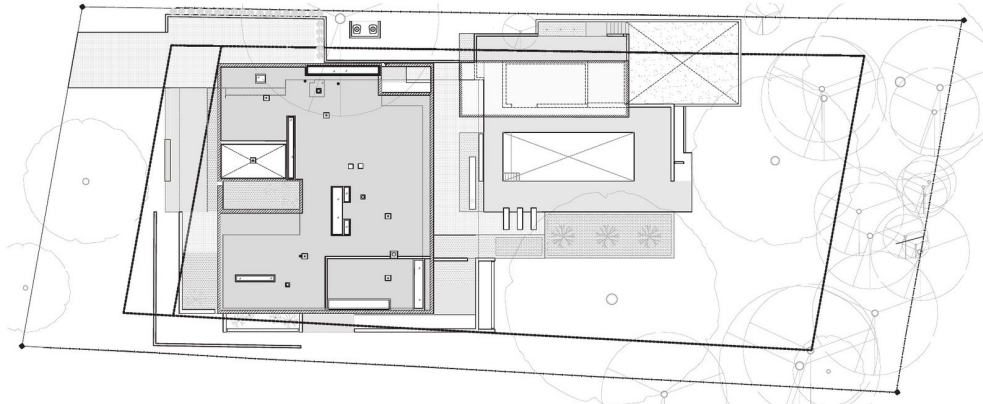
Custom Residential · Design Development

Dana Dai · Architectural Coordination + Interior Design

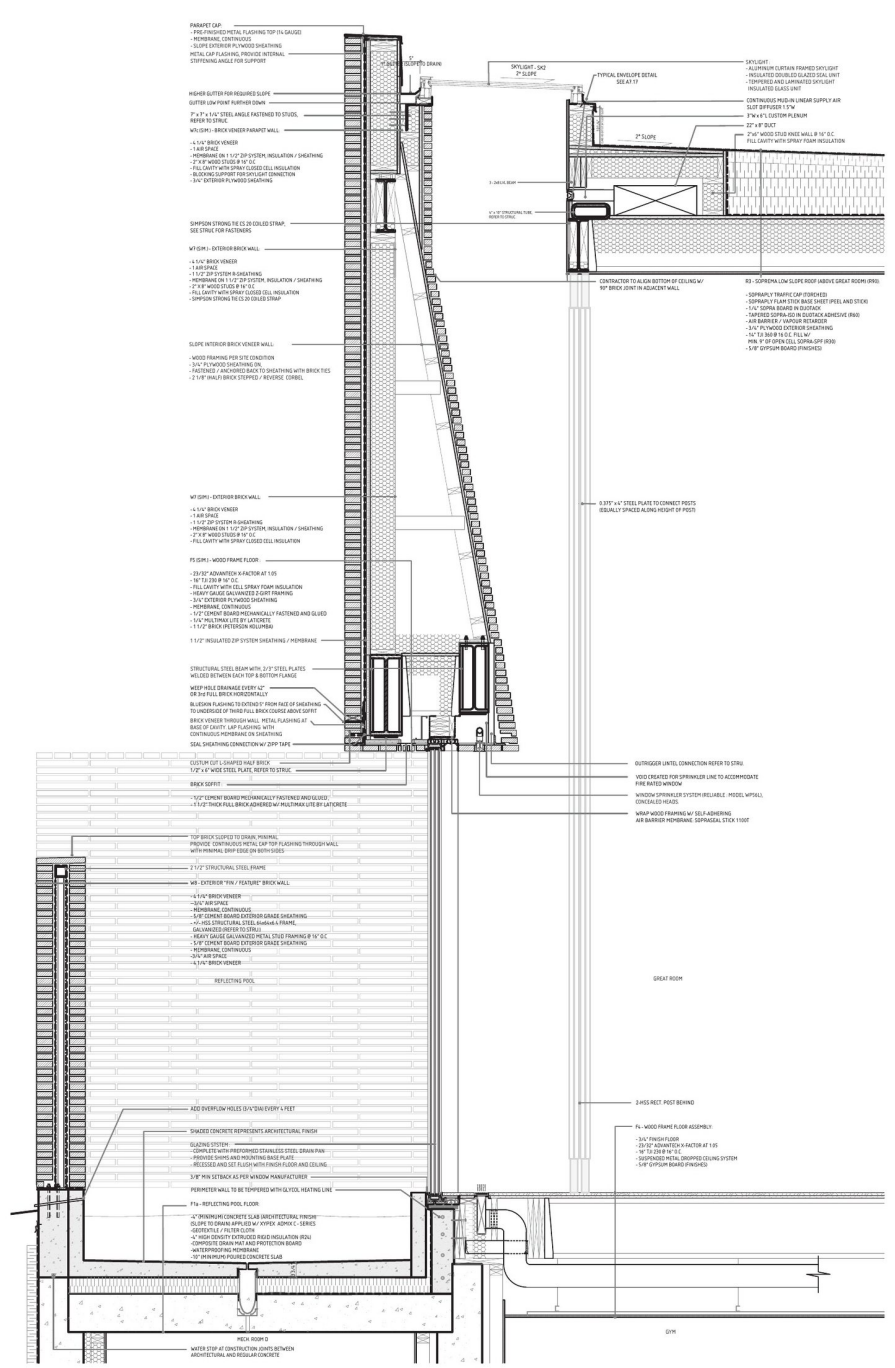
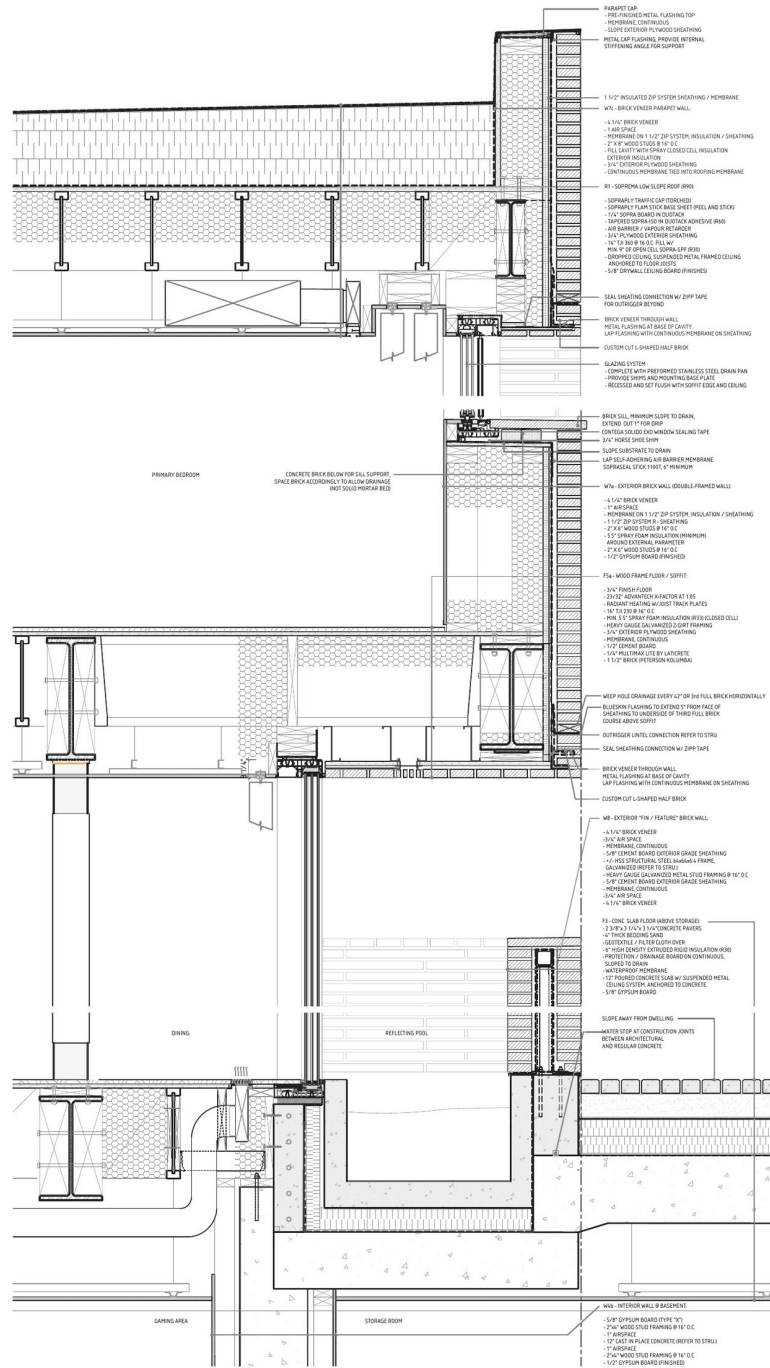
Burgundy Residence

A complex custom residence defined by restrained material expression, frameless transitions, and precisely coordinated architectural details. The project required close collaboration with the construction manager, structural and mechanical engineers, envelope consultant, glazing specialists, steel fabricators, and concrete and masonry trades.

Particular attention was given to structural integration, envelope continuity, concealed building systems, exact brick coursing, and the translation of minimal design intent into constructible site conditions. The residence is currently under construction, with completion anticipated in late 2026.



Burgundy Residence



PB Bakery



Hospitality + Retail Interior

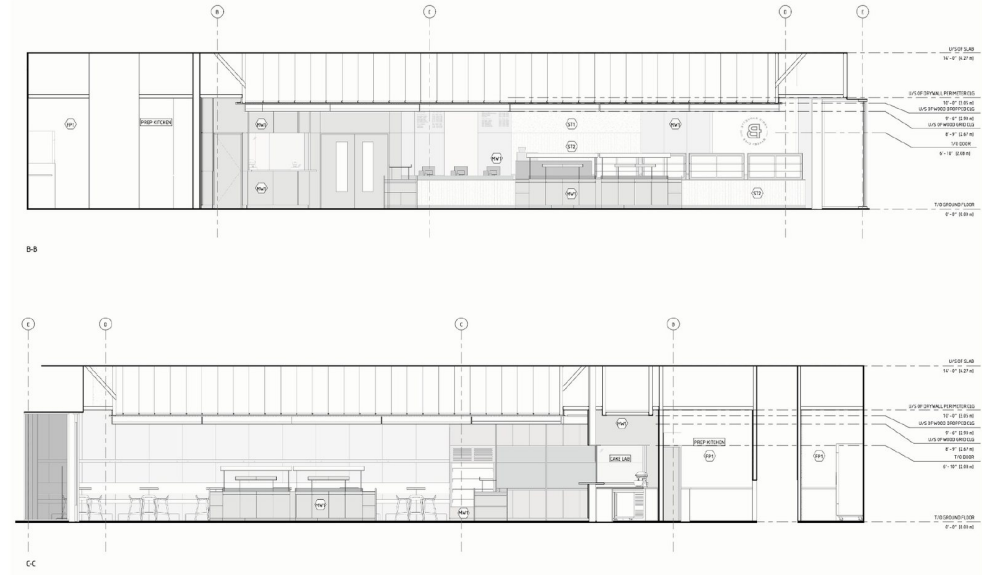
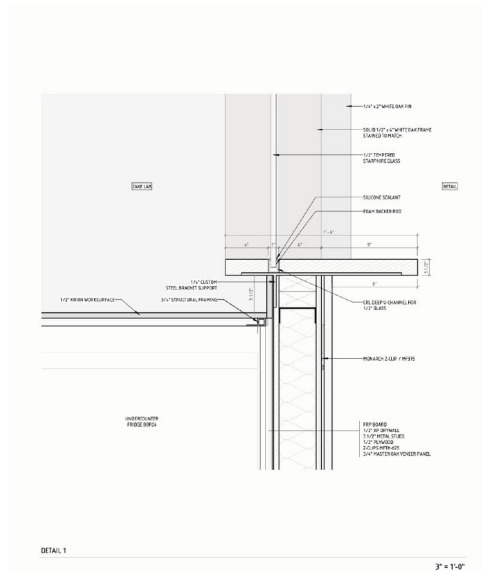
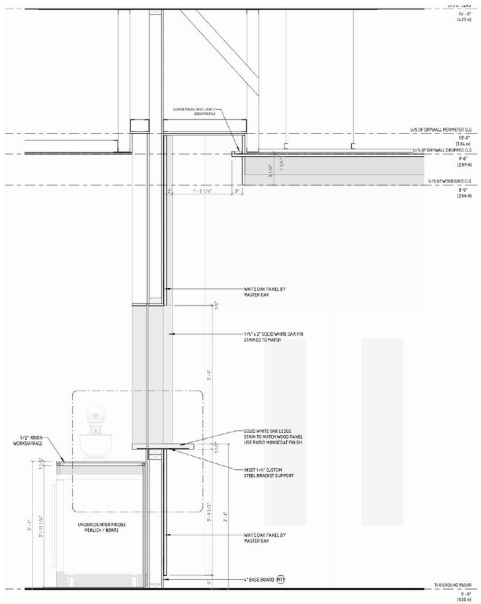
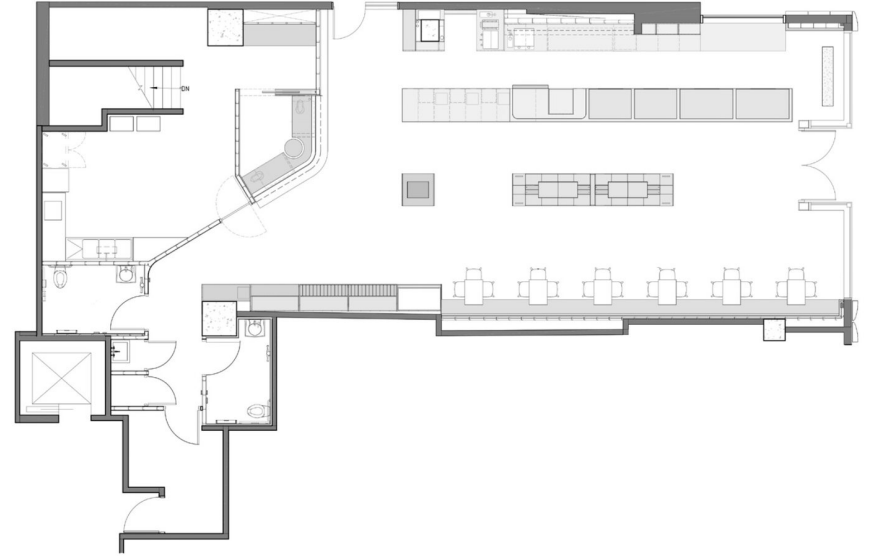


Dana Dai · Architectural Design + Project Coordination

PB Bakery

Award Best of Design Award 2025 - Retail
Location Toronto, Ontario
Team Guido Costantino Projects

PB Bakery is the first Canadian flagship location for an international bakery brand from South Korea, located on Bloor Street in downtown Toronto. The project involved adapting a global brand concept to a constrained, high-traffic urban site, with additional coordination required between the local project team and the company's U.S. management team.



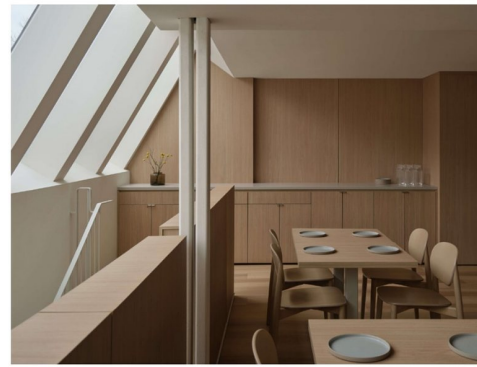
Occhiolino

Award Best of Design Award 2025 - Retail
Location Toronto, Ontario
Team Guido Costantino Projects

A former auto shop was transformed into a pasta workshop and restaurant, requiring careful coordination between existing site conditions, back-of-house production, and front-of-house dining. The project balances operational efficiency with an intimate and refined hospitality experience.

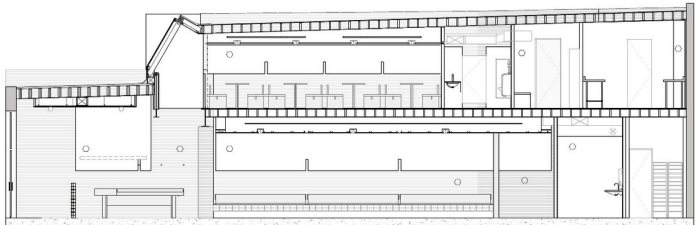
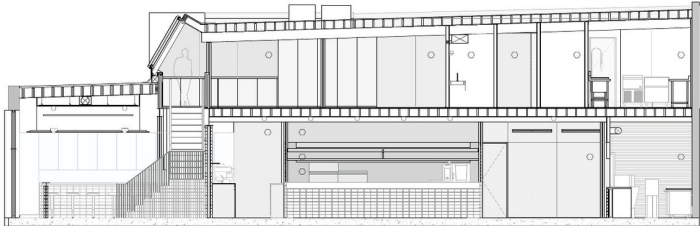
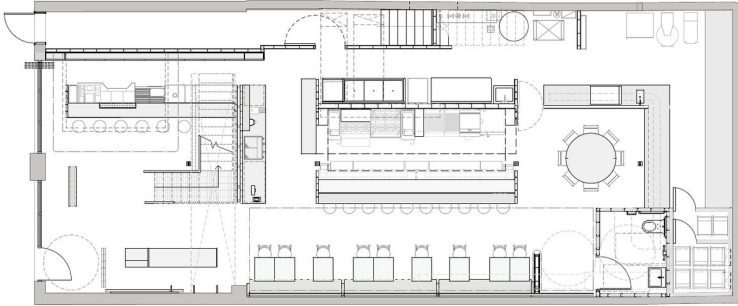
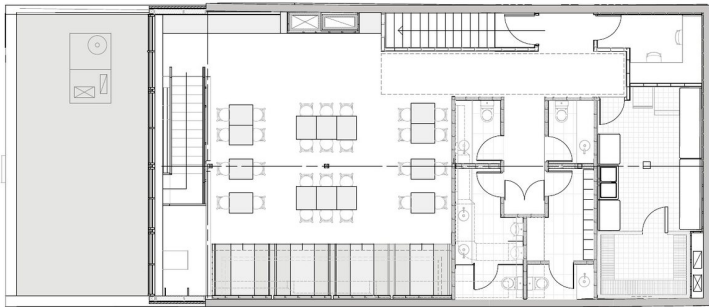
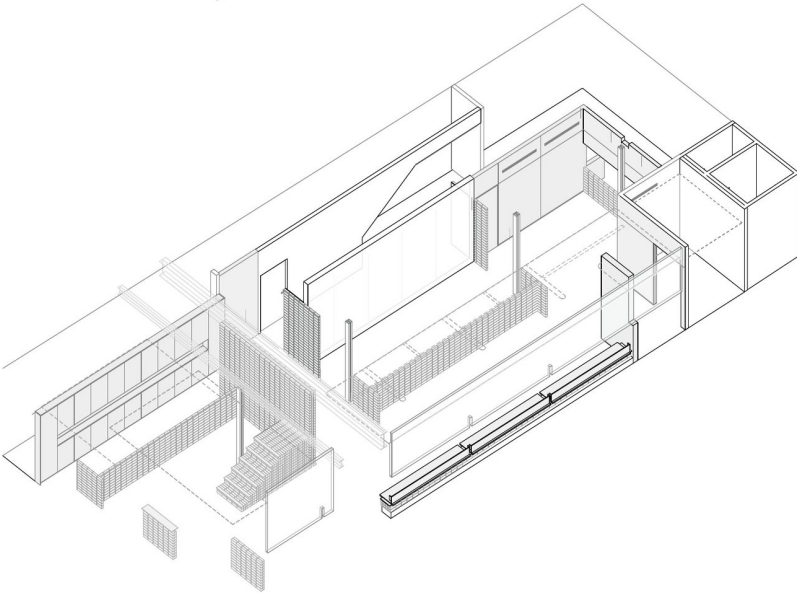
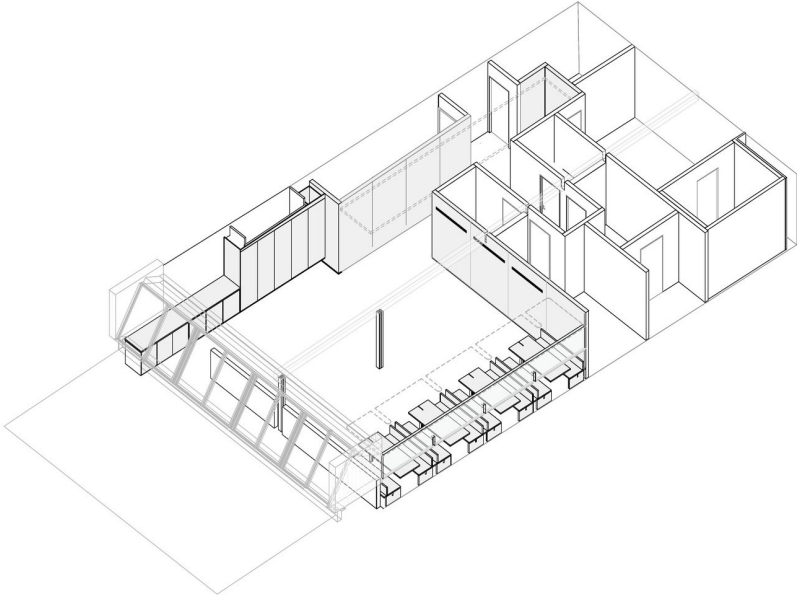


Hospitality Interior · Adaptive Reuse



Dana Dai · Architectural Design + Coordination

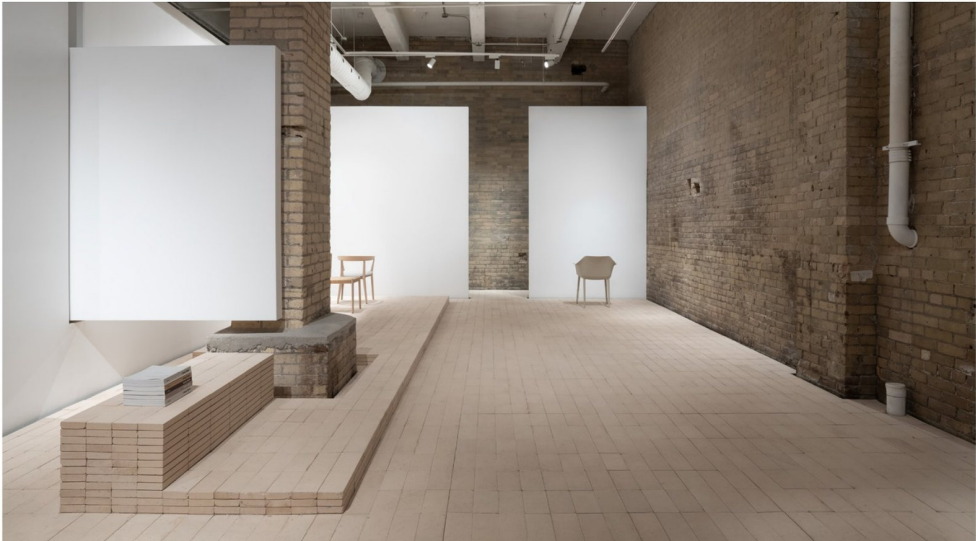
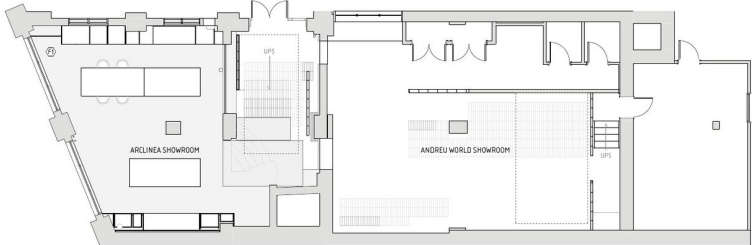
Occhiolino



Arclinea & Andreu Showroom

Award AZ Awards 2026 - Award of Merit
Location Toronto, Ontario
Team Guido Costantino Projects

Arclinea & Andreu Showroom combines two international design brands within one multi-space retail environment. My work supported architectural coordination and visualization, helping communicate how two brick tonalities, product displays, circulation, and the existing historic brick walls come together as a cohesive showroom experience.



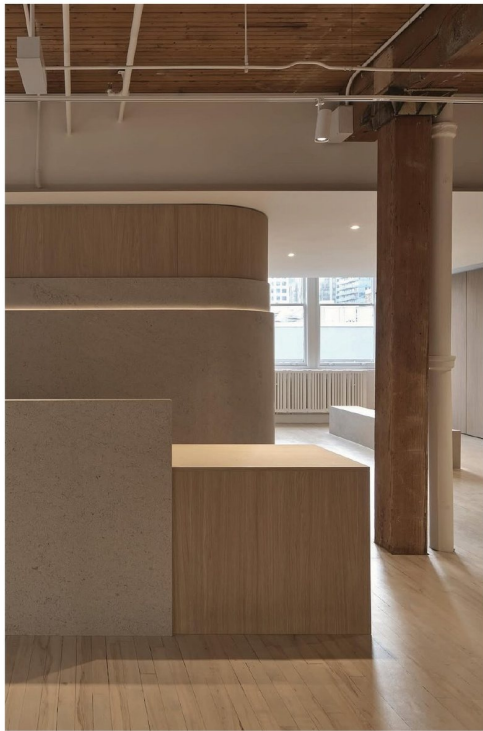
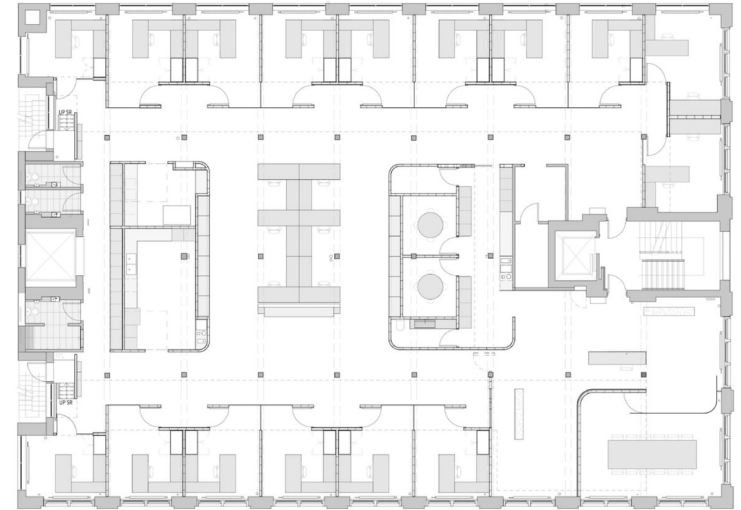
Showroom Interior · Multi-Brand Retail Environment

Dana Dai · Architectural Coordination + Visualization

Duncan Law Office

Type Office
Location Toronto, Ontario
Team Guido Costantino Projects

A workplace interior within a historic Toronto building, using lighting, circulation, and material coordination to connect private offices with shared working areas while responding to existing site and flooring conditions.



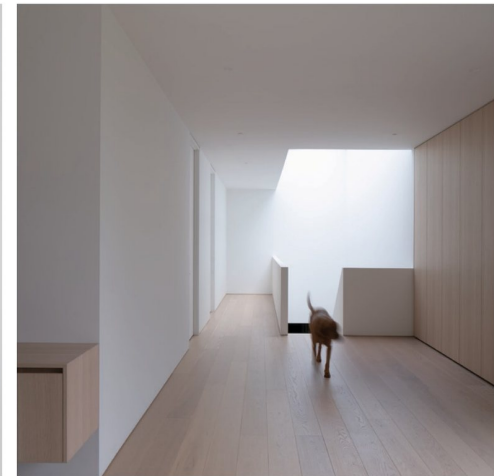
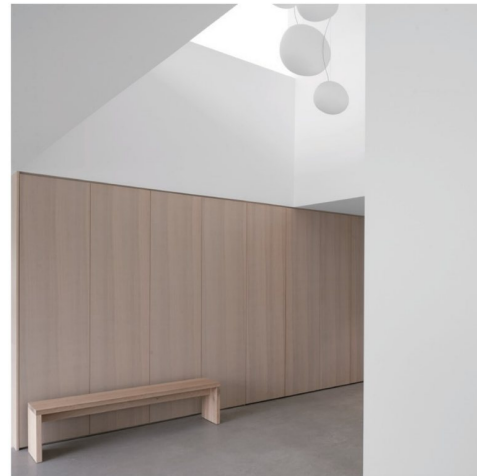
London Residence

Type Custom Residential
Location London, Ontario
Team Guido Costantino Projects

London Residence applies a minimal architectural language within a traditional residential context in London, Ontario. The project required clear design documentation to communicate contemporary massing, spatial organization, and material restraint while remaining sensitive to the surrounding neighbourhood character.



Custom Residential · Contemporary Infill

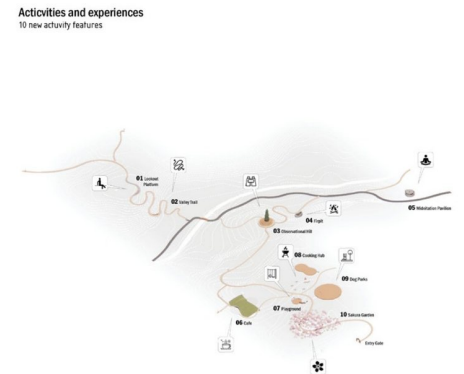
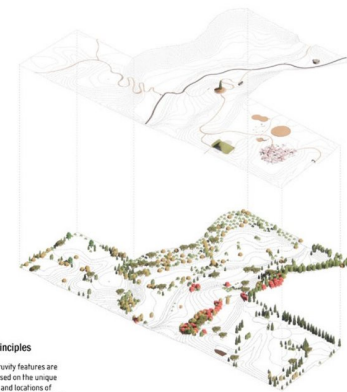
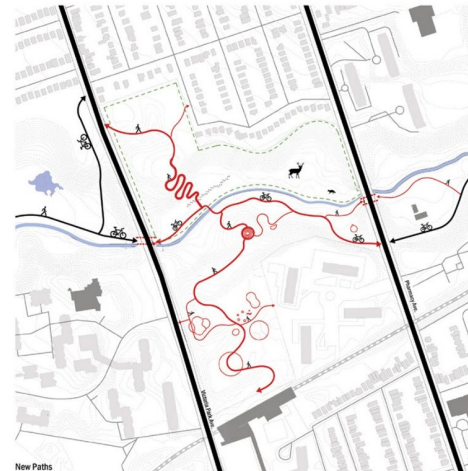


Dana Dai · Design Documentation

The Missing Piece

Type Infrastructure Park + Public Landscape
Location East York, Ontario
School OCAD University · Thesis
Award Environmental Design Award for Excellence in Sustainable Design, 2023

The Missing Piece proposes the transformation of a publicly owned city golf course in East York into an infrastructure park and public landscape. The project addresses a missing connection in the eastern ravine network by restoring pedestrian access, ecological movement, and public services. The design explores how underused public land can support social infrastructure, community access, and habitat continuity within the city.



The Missing Piece

Natural Zone



Lookout Platform

A viewpoint to take a rest, enjoy the view to unique parts of the landscape



Valley Trail

A slow and fun way to experience elevation in the valley

Quiet Zone



Observational Hill

Take a detour around a tree, enjoy the best view of sunset



Firepit

Have a cup of coffee with family or friends, enjoy the quiet water night



Meditation Pavilion

A quiet corner semi-underground pavilion for meditation and yoga to rest your mind, relax the body

Urban Zone



Cafe

A camouflage architecture set on a 6-meter high hill, connects multiple elevations, enjoy the view of the park and a third place in Scarborough to hang out



Outdoor Cooking Hub

A gathering place for family and friend days, make and share food while enjoy the view



Playground

A safe place for kids to play and make friends



Dog Parks

Two dog parks designed for different size animals serving the needs of immediate apartment building residents



Sakura Garden

A circular path through cherry forest, which turns to a pink forest during springs



North - South Section Facing East

Landscape Transition from Natural to Urban



North - South Section Facing West

Human Activity Transition from Quiet to Active

The Cafe

Activity Zone:
Urban / Public Park

Typology:
Architecture

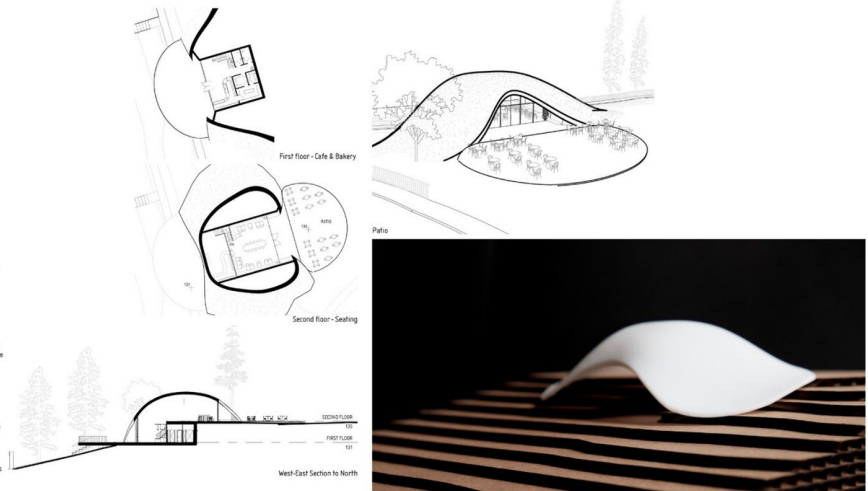
Size: 500 sq/m

Material:
Concrete support, roof covered with turf on top

Description:

The cafe can be found on the west side hill adjacent to Victoria Park Ave. Its curved roof covered with grass provides a natural camouflage, allowing it to blend into the landscape, while becoming a prominent park feature.

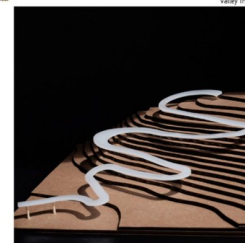
The green roof serves to reduce the building's environmental impact by managing stormwater and regulating temperature, while the very nature this collaboration from serves to invite people into the earth itself. When inside, clients proposition partners with further exploration, and once brought up to the top floor they are presented a full perspective of the park, with a natural vista hinting at the park's many offerings.



Meditation Pavilion



Lookout Platform



Valley Trail